

Exhibition on the History of Train Interiors (Moquette from Meiji, Taisho and Showa) Held

Suminoe Textile Co., Ltd. organized an exhibition highlighting the moquette (seat cloth) for train cars. The company first developed it in Japan and has continued its production and sales to this day.

[Osaka Event] Period: April 22 (Mon.) to August 31 (Sat.), 2019

Venue: Suminoe Textile Co., Ltd.
Showroom on the 4F of
the Head Office Building

[Tokyo Event] Period: September 17 (Tue.) to December 26 (Thu.), 2019

Venue: Suminoe Textile Co., Ltd.
Tokyo Showroom on the 3F
of BR Gotanda Building



We displayed rare original moquettes we have produced, over the change of the times through the eras of Meiji, Taisho, Showa and Heisei.

Most notably, the moquette indicating the emblem of the Osaka City Tram, miotsukushi channel marker, is the oldest domestic item preserved at the company. It astonished visitors with its vivid color retained from those days.

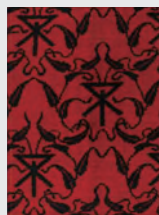
More recent moquettes displayed included those for the 0-series Shinkansen (operated by Japan National Railways) as well as those for other trains of JR and private railways. Visitors were able to directly touch them and feel the difference in materials, such as wool and polyester.

In addition to moquettes for train cars, we also displayed moquettes for ships used during the Taisho Era and early Showa Era. The classy designs for international passenger ships conjure an image of luxurious cruises in the good old days.

Since the exhibition attracted many visitors from across

Japan and was very well received, we extended the period of the Osaka Event and hastily organized the Tokyo Event.

It served as a wonderful opportunity to publicize the history of train interior materials and the Suminoe Textile Group's strong desire to take on new challenges and to become a "one-of-a-kind" company.



Seat cloth for Osaka City Tram



Seat cloth for the Ikegami-maru (ship) of O.S.K. Lines, Ltd.

Osaka SIP and Tokyo SIP (Showrooms)

Using these venues, we share information on interior fittings through projects, such as history exhibitions and seminars, and work on diverse cultural/social contribution activities.

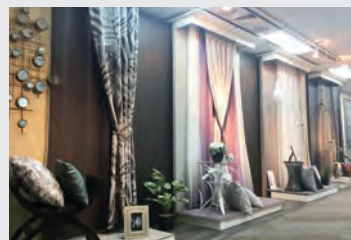


Osaka SIP

4F, 3-11-20 Minami-Semba,
Chuo-ku, Osaka

Phone
+81-6-6251-9380

Fax
+81-6-6251-9959



Tokyo SIP

BR Gotanda Building 3F
2-30-4 Nishi-Gotanda,
Shinagawa-ku, Tokyo

Phone
+81-3-5434-6545

Fax
+81-3-5434-2315

Editorial Postscript

Thank you very much for reading our CSR Report 2019.

We organized the information about the Group's ideas and projects related to CSR activities and expressed them in an easy-to-understand manner. While we receive growing demands for tackling international social challenges, we are determined to continue steady implementation of CSR activities to become a corporate group to be trusted. In this respect, we would be grateful if you could give us your candid opinions and comments about the Group's CSR activities by answering the questionnaire, for future reference.

CSR Report Editorial Team