

Suminoe Textile Group
CSR Report
2021

 **Suminoe Textile Co., Ltd.**

For inquiries about this Report:

CSR Promotion Department
Suminoe Textile Co., Ltd.
11-20, Minami-Semba 3-Chome, Chuo-ku, Osaka 542-8504, Japan
TEL: 06-6251-6817 FAX: 06-6251-6806
E-Mail: csr@sin.suminoe.co.jp
URL: <https://suminoe.co.jp/en/>



This publication was printed using vegetable oil ink that has less environmental impact.



The waterless printing technique used for this publication requires no dampening solution and prevents the release of harmful liquid waste during the printing process.



This publication uses easy-to-read fonts designed based on the Universal Design (UD) concept.



Offering Amenity Spaces and Enriched Lifestyles

For over 138 years since its inception, the Suminoe Textile Group has always endeavored to produce even better products in response to social needs that it has identified.

As a textile manufacturer, we will continue to embrace challenges to create state-of-the-art living spaces.

Editorial Policy

This CSR Report is published with the aim of helping all stakeholders deepen their comprehensive understanding of the Suminoe Textile Group by reporting on its management strategies, businesses and CSR activities.

Period Covered

Fiscal year 2020 (From June 2020 to May 2021)
(Some activities undertaken outside the above period are included.)

Scope of the Report

Suminoe Textile Co., Ltd. and its consolidated subsidiaries in Japan and overseas.
However, the scope varies according to the items reported.

Referenced Guidelines

ISO26000 Guidance on Social Responsibility
Guidance for Collaborative Value Creation

Date of Publication

December 2021
(The next report will be published in December 2022.)

Contents

Editorial Policy and Contents	1
Businesses and Global Operation Sites of the Suminoe Textile Group	3
Top Message	5
Medium- to Long-term Management Targets "SUMINOE GROUP WAY 2022-2024-2027"	6
Feature	
1 Dialogue: Suminoe Textile Supports the "Last Touches"	9
2 Global Expansion and Introduction of an Overseas Affiliate	13
Businesses and Strategies of the Suminoe Textile Group	
Overview and Growth Strategies of Each Business Segment	15
Foundation That Supports Growth	
Initiatives for CSR	
Corporate Philosophy and CSR System of the Suminoe Textile Group	23
Fiscal 2020 Results of CSR Activities	25

Enhancing Governance

Corporate Governance	27
Ensuring Compliance	29
Risk Management	31

Initiatives for Society

Personal Growth of Employees	33
Promotion of Occupational Health and Safety in the Suminoe Textile Group	35
Personal Success of Employees	37
Communication with Local Communities (Social Contribution Activities)	39

Initiatives for the Environment

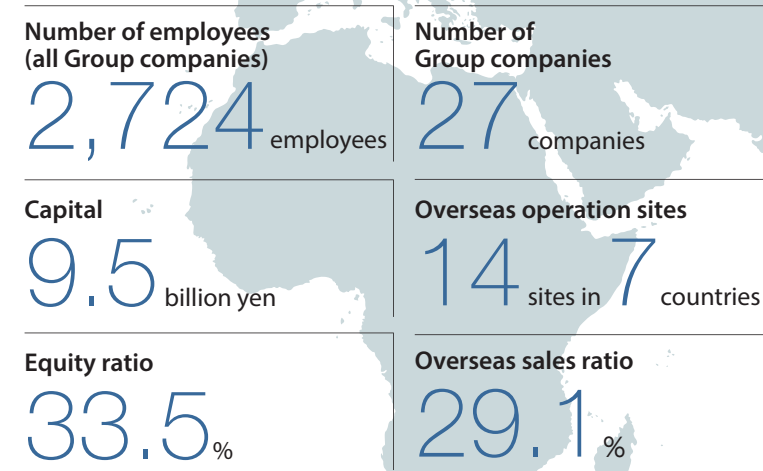
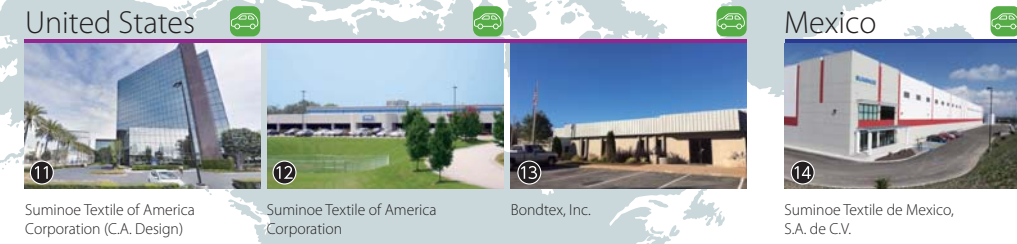
Environmental Management—Under the Slogan of KKR+A	40
Eco Challenge 2021	42
Eco Challenge 2021 (Fiscal 2020 Results)	43

Column / Editorial Postscript	46
--	----

Global Operations of the Suminoe Textile Group

The greatest strength of the Suminoe Textile Group lies in maximizing the capabilities of all Group companies through close cooperation between experts in research and technological development, production and sales.

Interior Fittings Automotive Textiles Traffic Facilities Functional Materials Arts and Crafts Textiles



Offices/Factories of Suminoe Textile Co., Ltd.

- ① Head Office (Osaka City)
- ② Tokyo Branch (Tokyo)
- ③ Nara Factory (Ikoma-gun, Nara Prefecture)
- ④ Shiga Factory (Koka City, Shiga Prefecture)
- ⑤ Kyoto Traditional Art and Craft Factory (Kyoto City)
- ⑥ Sapporo Sales Office (Sapporo City, Hokkaido Prefecture)
- ⑦ East Tokyo Sales Office (Wako City, Saitama Prefecture)
- ⑧ West Tokyo Sales Office (Isehara City, Kanagawa Prefecture)
- ⑨ Nagoya Sales Office (Nagoya City, Aichi Prefecture)
- ⑩ Hiroshima Sales Office (Hiroshima City)
- ⑪ Fukuoka Sales Office (Fukuoka City)

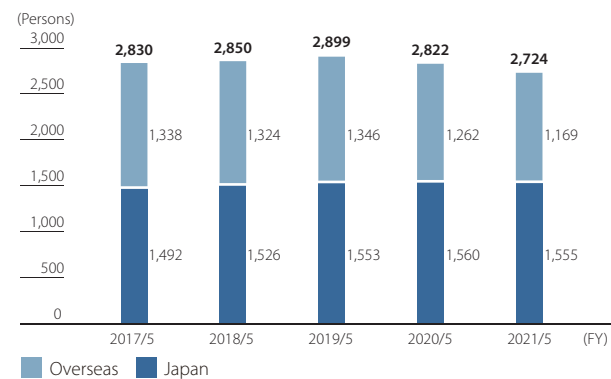
Major Group companies in Japan (head offices)

- ① SUMINOE Co., Ltd. (Osaka City)
Planning and sales of interior products, mainly carpets and curtains.
- ② RUNON CO., LTD. (Tokyo)
Planning and sales of interior products, mainly wallpapers.
- ③ Suminoe Logistics Co., Ltd. (Ikoma-gun, Nara Prefecture)
Product storage, handling, processing, and delivery.
- ④ Suminoe Works Co., Ltd. (Tokyo)
Installation of interior products.
- ⑤ Kansai Laboratory Co., Ltd. (Matsubara City, Osaka Prefecture)
Testing and inspection services.
- ⑥ Suminoe Teijin Techno Co., Ltd. (Osaka City)
Production and sales of automotive textiles, mainly seat covering materials.
- ⑦ Marunaka Souei Co., Ltd. (Osaka City)
Wholesale of traffic facilities textiles.
- ⑧ Suminoe Techno Co., Ltd. (Kyotango City, Kyoto Prefecture)
Production and processing of carpets, continuous fiber spinning (including recycling), and production and processing of needle punch carpets.
- ⑨ TANGO TEXTILE Co., Ltd. (Nara Factory (Ikoma-gun, Nara Prefecture))
Production and sales of plush hand-woven curtains, hand-woven carpets and hooked rugs, and other rugs.
- ⑩ Teijin Tecloth Ltd. (Inazawa City, Aichi Prefecture)
Production and sales of automotive seat covering materials, chair upholstery fabrics, and clothing textiles.
- ⑪ Owari Seisen Co., Ltd. (Osaka City)
Dyeing and finishing of automotive seat covering materials and interior fabrics.
Head Office (Ichinomiya City, Aichi Prefecture)
Ishikawa Factory (Nomi City, Ishikawa Prefecture)
- ⑫ Sewing Hyogo Co., Ltd. (Tamba City, Hyogo Prefecture)
Sewing and processing of fabric products.
- ⑬ INTEC CO., LTD. (Osaka City)
Development, design and sales of test equipment and measuring instruments.
- ⑭ CPO Co., Ltd. (Tokyo)
Interior design, construction and supervision, manufacture and sale of custom-made furniture.

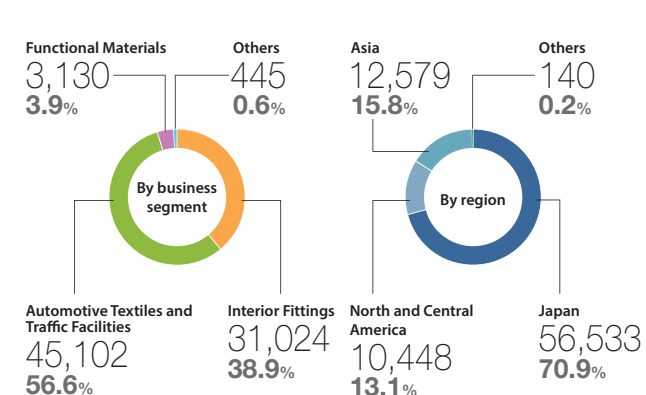
Corporate Summary (as of May 31, 2021)

Name of Company	Suminoe Textile Co., Ltd.
Head Office	11-20, Minami-Semba 3-Chome, Chuo-ku, Osaka 542-8504, Japan
Founded	1883
Incorporated	December 25, 1913 Suminoe Textile Joint-Stock Company
Organizational Change	December 26, 1930 Suminoe Textile Co., Ltd.
Capital	9,554,000,000 yen
Number of Employees	253 (Consolidated group companies: 2,724 employees)

Changes in the number of employees



Net sales breakdown (fiscal year ended May 31, 2021)



Consolidated financial results (Unit: Million of yen)

