

## Corporate Summary

**SUMINOE Co., Ltd.**

<b>Name of Company</b>	SUMINOE Co., Ltd.	
<b>Head Office</b>	11-20, Minami-Semba 3-Chome, Chuo-ku, Osaka 542-8504 Japan	
<b>Founded</b>	1883 (Founder Denshichi Murata began manufacturing carpets.)	
<b>Incorporated</b>	December 25, 1913 (Suminoe Textile Joint-Stock Company)	
<b>Organizational Change</b>	December 26, 1930 (Suminoe Textile Co., Ltd.)	
<b>Capital</b>	9,554,173,950 yen (As of May 31, 2025)	
<b>Board of Directors and Corporate Auditors</b>	President	Teppei Nagata (Representative Director)
	Managing Director	Hiroaki Usgui (Representative Director)
	Director	Norihisa Murase
	Director	Kazuaki Suwa
	Outside Director	Haruo Shimizu
	Outside Director	Kohei Nomura
	Outside Director	Yumiko Oida
	Outside Director	Kyoko Kato
	Corporate Auditor	Hirofumi Kawanishi
	Outside Corporate Auditor	Hidesuke Amachi
	Outside Corporate Auditor	Toshihiko Miyamoto
	(As of August 28, 2025)	
	263 employees	
<b>Number of Employees</b>	(Consolidated group companies: 2,943 [1,625 in Japan; 1,318 overseas]) (As of May 31, 2025)	

The greatest strength of the SUMINOE GROUP lies in maximizing the capabilities of all group companies, through close cooperation between experts in research and technological development, production and sales.

CORPORATE PROFILE  
2025–2026

<p><b>Sales</b></p> <p>Expertise in proposing optimal solutions that precisely satisfy each customer's needs</p>	<ul style="list-style-type: none"> <li>● SUMINOE Interior Products Co., Ltd.</li> <li>● SUMINOE Co., Ltd. (Industrial Material Business Headquarters)</li> <li>● SUMINOE Co., Ltd. (Traffic Facilities Business Headquarters)</li> <li>● SUMINOE Co., Ltd. (Functional Materials Business Headquarters)</li> </ul>	<ul style="list-style-type: none"> <li>● RUNON CO., LTD.</li> <li>● CPO Co., Ltd.</li> <li>● Suminoo Teijin Techno Co., Ltd.</li> <li>● PT. Sinar Suminoo Indonesia</li> <li>● SUMINOE Co., Ltd. (Interior Business Headquarters)</li> </ul>
<p><b>Production</b></p> <p>Production engineering capabilities that ensure the stable supply of high-quality products at low cost</p>	<ul style="list-style-type: none"> <li>● Suminoo Techno Co., Ltd. (Shiga Factory/ Nara Factory)</li> <li>● Tango Textile Co., Ltd.</li> <li>● SUMINOE Co., Ltd. (Kyoto Traditional Art and Craft Factory)</li> <li>● Sewing Hyogo Co., Ltd.</li> <li>● Teijin Tecloth Ltd.</li> <li>● Owari Seisen Co., Ltd. (Head Office Factory / Ishikawa Factory)</li> </ul>	<ul style="list-style-type: none"> <li>● PRETERIOR-TEXTILE Inc.</li> <li>● Suminoo Textile Shanghai Co., Ltd.</li> <li>● Suminoo Logistics Co., Ltd.</li> <li>● Marunaka Souei Co., Ltd.</li> </ul>
<p><b>Research and technological development</b></p> <p>Expertise in developing functions and designs that cater to market trends</p>	<ul style="list-style-type: none"> <li>● Seki Textile Co., Ltd.</li> <li>● INTEC CO., LTD.</li> <li>● Suminoo Textile of America Corporation</li> <li>● Bondtex, Inc.</li> <li>● Suminoo Textile de Mexico, S.A. de C.V.</li> <li>● Bondtex Lamination de Mexico, S.A. de C.V.</li> <li>● T.C.H. Suminoo Co., Ltd.</li> <li>● Suminoo Koide (Thailand) Co., Ltd.</li> <li>● PT. Suminoo Surya Techno</li> </ul>	<ul style="list-style-type: none"> <li>● Suminoo Teijin Techno Krishna India Pvt. Ltd.</li> <li>● SPM Automotive Textile Co., Ltd.</li> <li>● Suzhou Suminoo Koide Automotive Accessories Co., Ltd.</li> <li>● Suminoo Textile Vietnam Co., Ltd.</li> </ul>
	<ul style="list-style-type: none"> <li>● SUMINOE Co., Ltd. (Technology Development Center)</li> <li>● Suminoo Teijin Techno Co., Ltd. (R&amp;D Center)</li> </ul>	<p><b>Inspections and tests</b></p> <p>A testing laboratory that maintains independence, accredited under the Japan National Laboratory Accreditation System (JNLA)</p> <ul style="list-style-type: none"> <li>● Kansai Laboratory Co., Ltd.</li> </ul>



# Creating innovation in every space, based on the trust placed in us since our foundation



Teppei Nagata  
President

Since its establishment in Sumiyoshi, Osaka, in 1883, the Company has gradually expanded its business from hand-woven carpets to train seat upholstery materials, automotive interior materials, and new products, providing customers with a rich and comfortable lifestyle through interior design spaces. In recent years, in addition to expanding globally, the SUMINOE GROUP has been working together not only on the development of textile products and technologies added to textiles but also on non-textile fields, such as the development of products based on synthetic leather and resin compounding and forming technologies.

As our business operations change, we have made a new start by changing our trade name to “SUMINOE Co., Ltd.” as the final step in unifying our group management and in order to achieve further growth and increase our corporate value for the future. The entire SUMINOE GROUP will continue to strive to bring innovation to all spaces and create delightful lifestyles of the future.

**ECOS®**  
Recycled carpet tiles produced under the “closed-loop recycling” system

The ECOS® series of recycled carpet tiles has achieved the industry’s highest levels of both the post-consumption recycled material usage rate and the CO2 reduction contribution rate.

**Air-cleaning wall-coverings®**

With a superior level of safety, this wallpaper semipermanently deodorizes unpleasant smells by absorbing and decomposing substances causing offensive odors, on a 24-hour basis.

**Perforated artificial leather for design seat covering**

Perforated artificial leather with color variation and pattern designs on the vents, which tend to be inorganic.

**Noise-absorbing carpet for automobiles**

With noise absorption and insulation properties, this automotive floor carpet enhances the quietness inside a car.

**Seat cushion material SUMICUBE®**

Featuring light weight and safety in the event of a fire, SUMICUBE® is used for seats of various types of vehicles as a new cushion material. For this product, we have established techniques for after-use collection and recycling into fiber.

**Flooring film for signs**

This film serves as a non-slip mat that is easy to apply to the floor. With warnings or other signs printed on it, the film helps prevent accidents and attracts passengers’ attention at the entrances/exits of trains and buses, as well as within these vehicles.

**Floor materials for bathrooms**

Manufactured by shaping eco-friendly olefin materials into a sheet form, this bathroom flooring is safe and care-free. It is soft and warm to the touch, and thus can effectively prevent cold shocks.

**Deodorizing filters**

We have developed deodorizing filters by applying our unique deodorizing technologies cultivated through the development of interior products. Our deodorizing filters find expanding applications in refrigerators, air cleaners, and stationary deodorizers for home use.



**Meaning of the seahorse mark**  
The logo has been designed based on the previous logo of Suminoe Textile Co., Ltd. It symbolizes a seahorse proudly going forward into the future while cherishing tradition. The four diamonds represent a sparking ocean while indicating the Group’s “four businesses,” which create spaces, as well as rays of light spreading into the four quarters of the globe.

## Group Philosophy

VISION	MISSION	SPIRIT
The future we aim for	Our mission to fulfill	Values we cherish (Company Motto)
To set a “new comfort standard” in harmony with the times and the earth to create delightful lifestyles of the future.	Bring people- and society-friendly spaces to the world through technology and ideas that closely support people’s lives.	We pride ourselves as a pioneer in the interior industry and persist in a spirit of cooperation, sincerity and determination.
VALUE		
SUMINOE “4C” Values		
Basic guidelines for business activities		
Challenge	Take on challenges for new business development based on our advanced technological capabilities and extensive customer base as an industry pioneer.	
Create	Create new value by maximizing our unique technologies.	
Customer	Identify new challenges for further development, leveraging our ability to sincerely cater to customers and our foresight.	
Contribute	Continue to pursue manufacturing that is friendly to both people and the earth.	





## Our Only One

Original weaving techniques

# mode S

Splendid and sublime, sophisticated interior fabric collection presented by SUMINOE VOL.11

The Dynamic Jacquard series from "mode S" showcases our commitment to weaving techniques developed since the Company's founding. Intricate gradations are achieved through the use of lustrous yarns, varied yarn thickness, and layered weave structures.

Its greatest strength lies in its three-dimensional texture and large-scale pattern repeat, neither of which can be produced using simple weaving or printing techniques. The gradation-patterned designs are available in nine color variations, bringing depth and openness to any space.



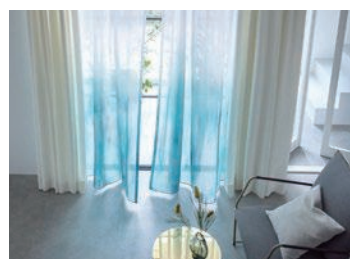
 **Diverse** patterns and rich color variations

## Interior Fittings

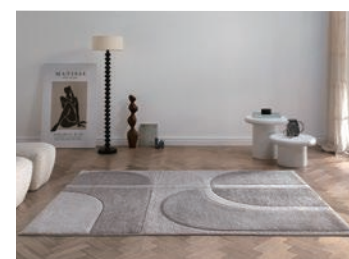
# At the Vanguard of Lifestyle Creation

Ever since 1891, when its carpets were supplied to the Imperial Diet Building on the occasion of its opening, the SUMINOE GROUP has created comfortable and safe living spaces as a pioneer in the Japanese interiors industry. Currently, our curtains and carpets are primarily marketed by SUMINOE Interior Products Co., Ltd. (Trade name changed from "SUMINOE Co., Ltd." on December 2, 2024) and our wallpaper and paper for sliding doors by RUNON CO., LTD. The SUMINOE GROUP is providing interior products that combine excellent design, functionality, and environmental friendliness for public facilities, hotels, schools, hospitals, and office buildings, as well as for general households. In 2020, CPO Co., Ltd., with deep expertise and exceptional construction know-how in store design, became part of the Group. In 2022, PRETERIOR-TEXTILE Inc. , specializing in the sales of curtains and other interior options, joined as well. By harnessing the strengths of each company, we aim to fulfill customer needs in the space design business at an even higher level.

## Introduction of products



Curtains: "mode S VOL.11"



Carpets: "Epilogue"



Industry-leading recycled carpet tiles: "ECOS iD-1600"



Wallpaper: "RUNON HOME 2023-2026" CRAFT LINE®

### What is doncho (plush hand-woven curtain)?

Doncho is a curtain that separates the stage from the auditorium. Our Company manufactures a wide variety of doncho, including: the prestigious Tsuzureori Doncho woven by hand by craftspeople; the Tango Doncho woven using the hooked rug method; the Suminoe Art Doncho woven with electronic Jacquard machines; the Yuzen Doncho, to which the Yuzen techniques are applied; and the Nassenger Print Doncho created with the Nassenger textile printing system, featuring high-resolution images reproduced by digital direct inkjet technology.



Doncho: [Tsuzureori Doncho] Arcrea HIMEI (Himeji City Cultural Convention Center)



Custom carpet: [Wilton carpet] The Tokyo Station Hotel 2F, Restaurant Blanc Rouge

### What is dantsu (hand-woven carpet or hooked rug)?

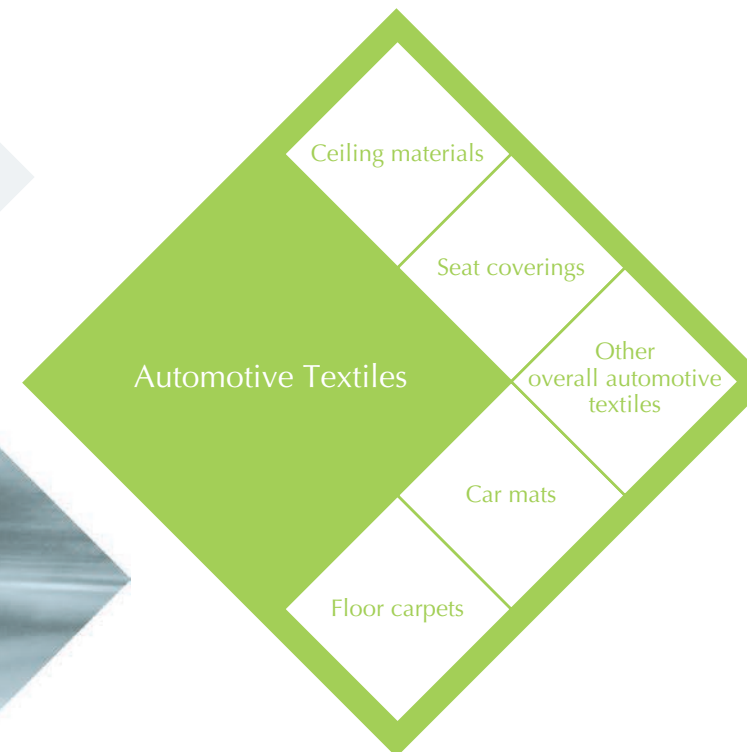
Dantsu is a generic name for high-class hand-woven floor carpets or rugs. The SUMINOE GROUP manufactures the hand-woven dantsu, derived from the Sakai-style Dantsu, which started to be woven in the Osaka Sakai area during the Tempo Period (1830-1844), and the Tango Dantsu, which is woven using the hooked rug method.

## Group companies

- ① SUMINOE Interior Products Co., Ltd.
- ② RUNON CO., LTD.
- ③ Suminoe Logistics Co., Ltd.
- ④ Sewing Hyogo Co., Ltd.
- ⑤ Tango Textile Co., Ltd.
- ⑥ CPO Co., Ltd.
- ⑦ PRETERIOR-TEXTILE Inc.





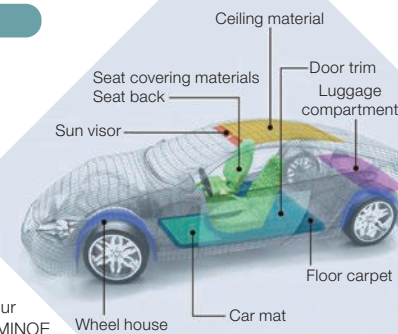


## Our Originality

### Global supplier

### Automotive textiles for all car components from floors to ceilings

While strengthening our proposals for the use of seat coverings made of new materials, we also encourage the change of materials to textiles for car components in which the Company has not conventionally engaged, in order to expand the scope of our product delivery. Through these efforts, SUMINOE is promoting business diversification as a total supplier. Meanwhile, we strive to augment our overseas sites in conjunction with the global expansion of Japanese automobile manufacturers.



Supplying our products to

 all Japanese automobile manufacturers

## Automotive Textiles

# Our Expertise in Proposing Optimal Solutions as a Total Supplier

In 1931, SUMINOE supplied carpets and seat covering materials for automobiles assembled and manufactured in Japan for Ford Motor Company and General Motors. After World War II, the production of domestic automobiles increased, with our products adopted in these Japanese-made cars one after another.

At present, SUMINOE supplies its products to all Japanese automobile manufacturers.

The greatest feature of our Company is that we can supply a total line of automotive textiles, from floors to ceilings, including headliners, seat covering materials, car mats, and floor carpets.

We aim to establish an optimal global supply system by expanding our manufacturing and sales bases beyond Japan to 13 locations in seven countries: the U.S., Mexico, China, Thailand, Indonesia, India, and Vietnam—home to the main factory of our functional materials business.

### Delivery track records



Harrier,  
Toyota Motor Corporation



Noah,  
Toyota Motor Corporation



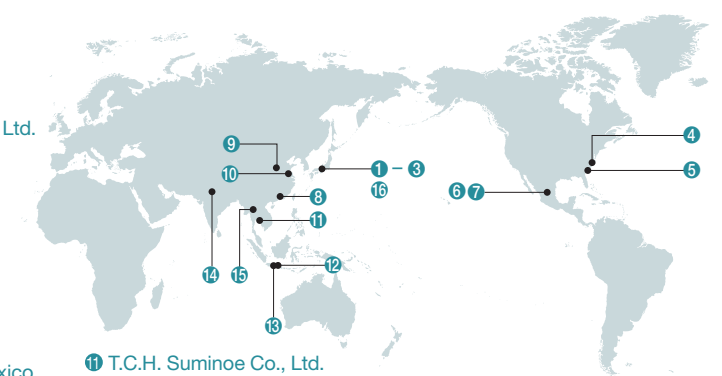
ZR-V,  
Honda Motor Co., Ltd.



Freed,  
Honda Motor Co., Ltd.

### Group companies

- ① Suminoe Teijin Techno Co., Ltd.
- ② Teijin Tecloth Ltd.
- ③ Owari Seisen Co., Ltd.
- ④ Suminoe Textile of America Corporation
- ⑤ Bondtex, Inc.
- ⑥ Suminoe Textile de Mexico, S.A. de C.V.
- ⑦ Bondtex Lamination de Mexico, S.A. de C.V.
- ⑧ SPM Automotive Textile Co., Ltd.
- ⑨ Suzhou Suminoe Koide Automotive Accessories Co., Ltd.
- ⑩ Suminoe Textile Shanghai Co., Ltd.

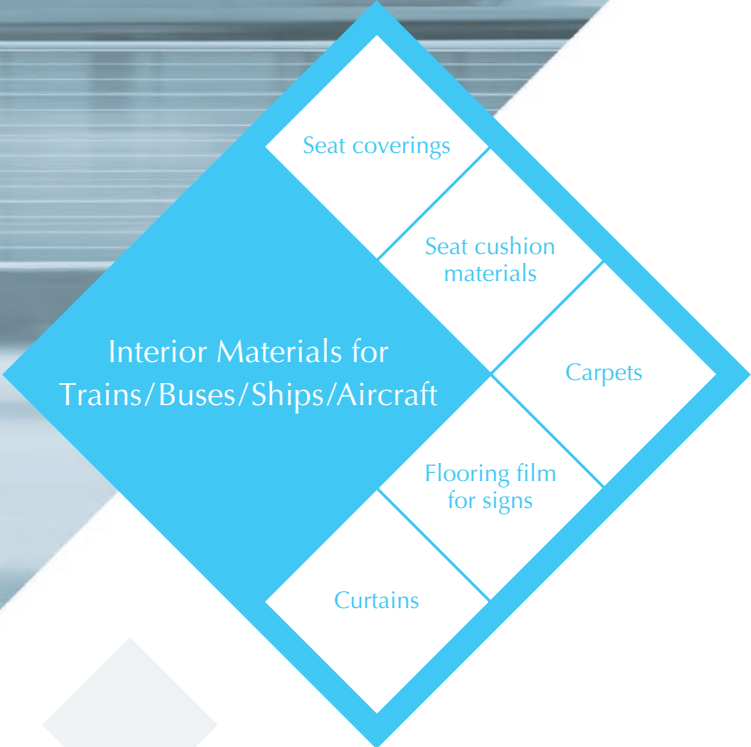


- ⑪ T.C.H. Suminoe Co., Ltd.
- ⑫ PT. Suminoe Surya Techno
- ⑬ PT. Sinar Suminoe Indonesia
- ⑭ Suminoe Teijin Techno Krishna India Pvt. Ltd.
- ⑮ Suminoe Koide (Thailand) Co., Ltd.

(Associated company)

- ⑯ KST Co., Ltd.





# Our Originality

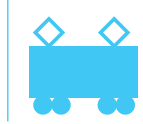
Creating a safe and comfortable space in a train

## Seat cushion material "SUMICUBE®"

The SUMICUBE® polyester seat cushion material uses a safe raw material that does not emit poisonous gases, such as cyanide gas, in the event of a fire. For SUMICUBE®, we have established techniques for after-use collection and recycling into fiber, as part of our efforts to reduce industrial waste to zero. SUMICUBE® is adopted not only in commuter cars of JR and private railways and publicly operated transportation services, but is also widely used in express trains and Shinkansen bullet trains, whose seats are required to provide a higher degree of comfort.



East Japan Railway Company: E235 series



Seat cushion materials market share of **36%**

## Interior Materials for Trains / Buses / Ships / Aircraft

# Confidence Based on Our Experience as a Pioneer

In 1896, we succeeded in producing hand-woven moquette as a seat covering for the first time in Japan. This domestic moquette was adopted by Japan National Railways (now JR) for its seat coverings in 1899. Since then, we have supplied our products to JR, private railways and publicly operated transportation services, maintaining the top market share for more than a century. Currently, SUMINOE offers total proposals for seat coverings, curtains, wall materials, flooring materials and other interior materials for public transportation systems, such as Shinkansen bullet trains and other trains, buses, ships, and aircraft. We also deliver environmentally friendly products, including SUMICUBE® seat cushion material, which excels in terms of both safety and environmental performance.

### Delivery track records



Hokuriku Shinkansen  
Seat coverings and Roll screen



TOBU RAILWAY CO., LTD.  
"SPACIA X" Series N100  
Seat coverings, curtains, carpets, and pillowcase



ALL NIPPON AIRWAYS CO., LTD (ANA),  
Boeing 777-300ER  
Premium Economy Class  
Seat coverings



Kanagawa Chuo Kotsu Co.,Ltd.  
Articulated bus  
Seat coverings and floor materials



Hankyu Corporation  
"PRIVACE" Series 2300  
Seat coverings, carpets, and pillowcase



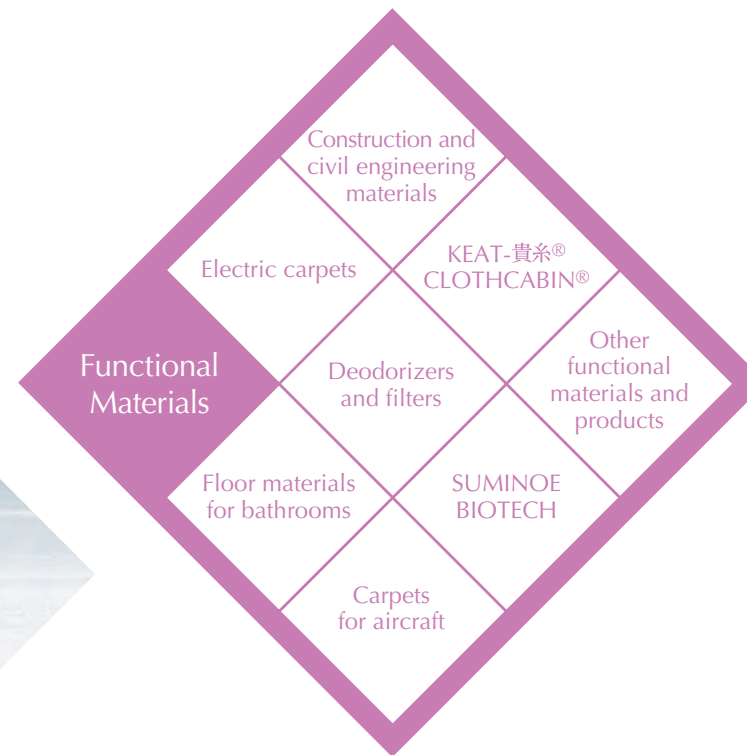
Kintetsu Railway Co.,Ltd  
Series 8A  
Seat coverings and OH Film

### Group companies

- ① Marunaka Souei Co., Ltd.
- ② Seki Textile Co., Ltd.







## Our Originality

Our unique deodorizing technology TRIPLE FRESH®

Expanding technological applications into other fields in pursuit of further possibilities

Our unique deodorizing technology, originally developed for our interior products, is proactively applied to other fields. This technology is now incorporated not only into deodorizing filters used in air purifiers and other household appliances, but also in other different fields, such as clothing, shoes, medicine and nursing care. We are also exploring possibilities for our deodorizing technology, by encouraging its use in materials other than textiles, such as resin films.



Development of diverse applications

## Functional Materials

# In Pursuit of Endless Business Possibilities

Transcending the boundaries of our traditional business segments, such as interior fittings and automotive textiles and traffic facilities, we have embarked on business targeting other fields and industries. SUMINOE has offered products that incorporate the unique technologies we have accumulated, such as TRIPLE FRESH® deodorizing filters and olefin bathroom flooring. In addition, the Company offers new value in the field of functional materials (SUMINOE BIOTECH) based on biotechnology, in keeping with the theme of KKR+A, or Kenko (Health), Kankyo (Environment), Recycle and Amenity.

## Introduction of products



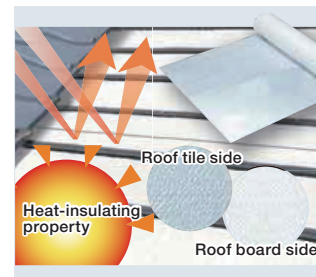
**Electric carpet**  
Fabric-coated heating products such as electric carpets and electric blankets



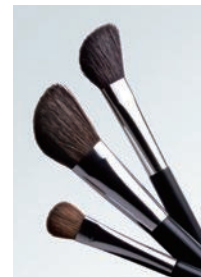
**Floor material for bathrooms**  
Bath flooring made of eco-friendly olefin materials



**The Tispa® Series, "Real Odor Deodorization without Disguising with a Scent"**  
A series of stationary deodorizers for home use, making use of a deodorant filter.



**Roofing materials**  
Our roofing sheets are breathable, heat-insulating, and highly energy-saving. These sheets are used as a waterproof material for the roofs of ordinary houses.



**KEAT-貴糸®**  
Special polyester yarns for drawing and makeup brushes and fudepen (calligraphy pens).



**Carpets for aircraft**  
SUMINOE has supplied carpets for aircraft to major Japanese airlines, and has maintained the top share of the domestic market.



**CLOTHCABIN®**  
A high-function net for screen doors.  
\* CLOTHCABIN is a registered trademark of TEIJIN FRONTIER CO., LTD.



Kakidanomi, a persimmon polyphenol supplement that we have jointly developed with Kindai University.

**SUMINOE BIOTECH**  
Functional materials based on biotechnology, and foods, processed foods, cosmetics, etc., making effective use of these materials.

## Group companies

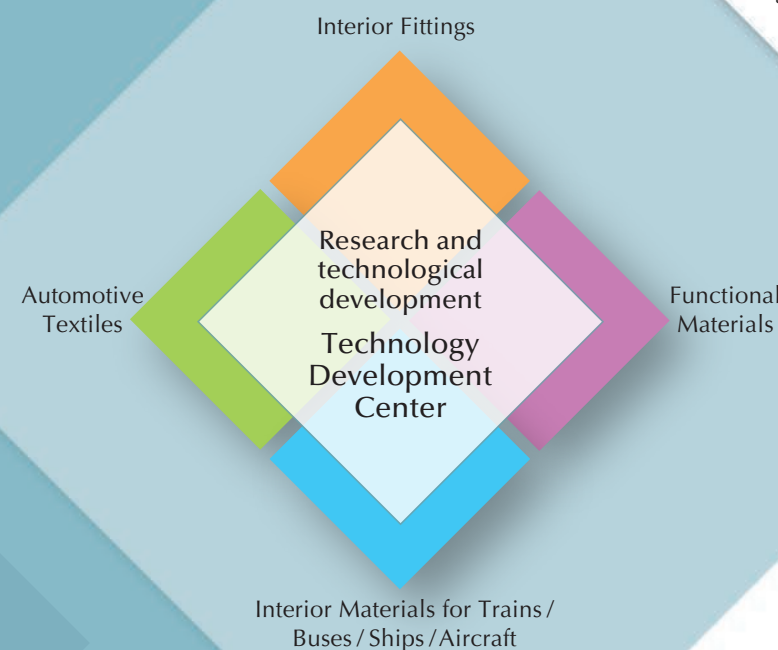
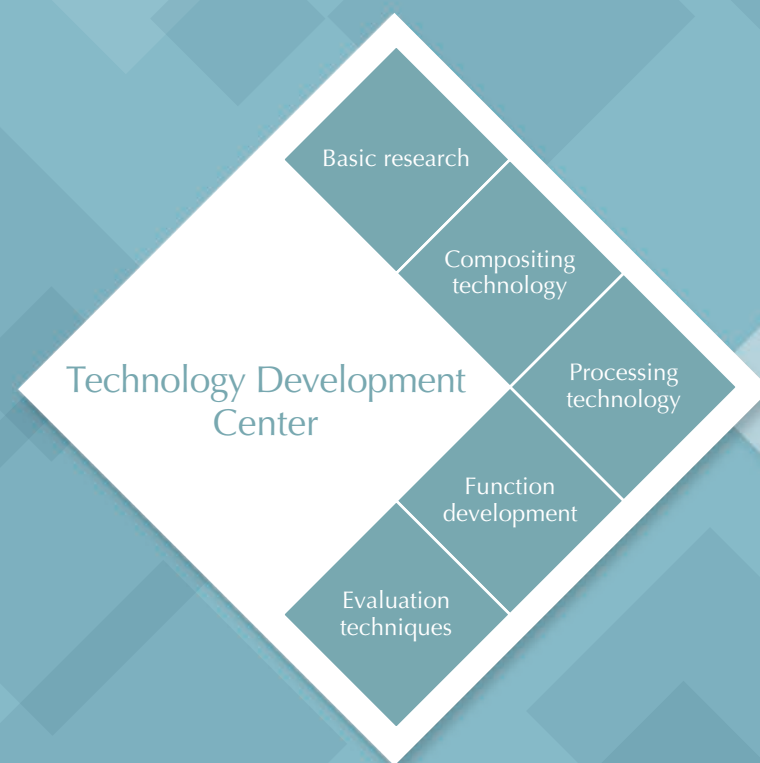
① Suminoe Textile Vietnam Co., Ltd.





# A Place where Innovations are Born

The Technology Development Center plays a pivotal role in the SUMINOE GROUP research and technological development. The center is located in the Yamato Basin in Nara Prefecture in proximity to Horyuji Temple, which is listed as a World Cultural Heritage Site by UNESCO. In this quiet environment, our development activities are carried out mainly by young technological staff, in order to bring about technological innovations. The Technology Development Center conducts development activities under the theme of “KKR+A,” or Kenko (Health), Kankyo (Environment), Recycle and Amenity. Aiming to embody this theme, the center works in collaboration with the relevant departments, focusing on the two mainstay technologies unique to us, i.e., textile-related functional processing and resin compounding/molding. The Technology Development Center will remain committed to sustaining strong customer trust in the SUMINOE GROUP, while venturing into new fields.



## Topics

### Establishment of the Technology Development Center

The center was established in December 2021 to promote our efforts to achieve the SDGs and to seek novelty in product development and accelerate development capabilities from the perspective of the manufacturer and user.



### Strengthening our in-house antibacterial and anti-virus testing system

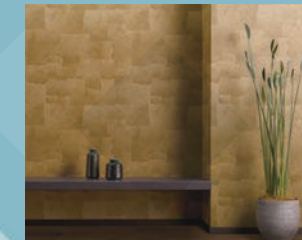
In addition to antibacterial testing, we have introduced anti-virus testing, achieving faster testing and improved quality. We have developed a highly durable antibacterial and anti-virus coating called “Vguard.”



### Deodorizing technology

#### TRIPLE FRESH® playing an active role in various fields

In 1998, SUMINOE developed TRIPLE FRESH® deodorant treatment technology, which can absorb and decompose formaldehyde — one of the culprits behind sick house syndrome. Ahead of the times, TRIPLE FRESH® has been evolving into a deodorizing technology that meets the needs of various fields, finding wide applications not only in carpets, curtains and wallpaper, but also in automotive textiles, seat coverings for railway trains, and deodorizing filters. Currently, with enhanced effectiveness in deodorizing fecal and body odors, this technology is applied to medical and nursing-care products. We also own plenty of high-level analytical and evaluation equipment and facilities related to deodorization.



Deodorant wallpaper (Interior Fittings)

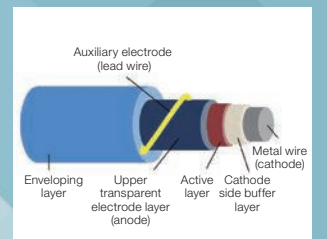


Deodorizer for home use (Functional Materials)

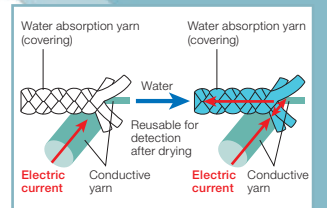
### Smart textile

#### Entering the field of sensor fabrics using photovoltaic fibers and water wetting detection fabrics

As a project subsidized by NEDO, we developed fiber/textile-shaped photovoltaic cells through industry-academia collaboration. They are expected to be in high demand as autonomous power sources for wearable devices and indoor condition measurement sensors. In addition, we are aiming to commercialize them as sensor fabrics, together with water wetting detection fabrics and fabric electrodes, in the fields of nursing care and monitoring, and of health management during exercise.



Textile capable of photovoltaic power generation

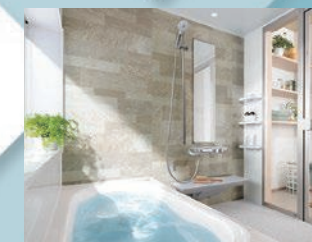


Basic principles of water wetting detection fabrics

### Olefin material compounding and molding technologies

#### Shaping high-function olefin materials into various forms

Olefin materials emit less smoke and toxic gases at the time of combustion, and are therefore friendly to both people and the environment. Capitalizing on its unique nanocomposite technology, the Company has developed highly functional products using olefin materials. Currently, our olefin materials are adopted in sign/warning films to be applied on the floors of buses and train cars, core materials for train doors, and Hokkarari Floor for TOTO's bathroom units.



Floor material for bathrooms (Functional Materials)



OH Film (Interior Materials for Trains / Buses / Ships / Aircraft)



## Archive

# SUMINOE has contributed to society as an interior manufacturer, in response to major trends of the times.

SUMINOE was founded in 1883, when our founder opened a factory in Sumiyoshi Village of Osaka Prefecture (now Sumiyoshi Ward of Osaka City). Our Company succeeded in manufacturing a carpet in 1890, and then hand-woven moquette as a seat covering for railway cars in 1896; both of these products were the first of their kind in Japan. As a pioneering manufacturer in the Japanese interiors industry, we have greatly contributed to the modernization of lifestyles as well as the development of interior furnishings for automobiles and railway trains.

We hereby present a brief history of SUMINOE, which has courageously taken on various challenges as a trailblazer in the industry for more than 140 years since its founding, while overcoming many difficulties.



Founder  
Denshichi Murata

## Meiji Period 1868~ Contribution to Japan's modernization

In the Meiji Era (1868–1912), Western culture was introduced to Japan in the context of civilization and enlightenment. The forerunner to our Company delivered its interior materials to the Imperial Diet Building (now the Diet Building) and other leading Western-style buildings in Japan, as well as to trains for railways, which were developed in line with the national policy. In so doing, we contributed to Japan's modernization.

### Imperial Diet Building

In 1891, we supplied the carpets for the Imperial Diet Building on the occasion of its opening. For the present-day Diet Building, we continue to supply the "red carpet" and seat coverings used in the chambers of both the House of Councillors and the House of Representatives.



Imperial Diet Building (courtesy of the National Diet Library)



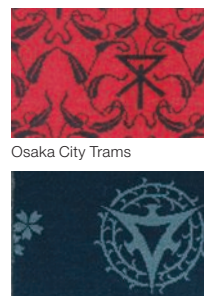
Carpets supplied to the Imperial Diet Building on the occasion of its opening

### Trams

Trams, which began to run in Kyoto in 1895, became widely introduced in various parts of Japan as a means of transportation for the general public. Our Company designed seat coverings featuring city emblems for Osaka City Trams. Later it became a popular trend to incorporate city emblems in seat cover designs for city trams nationwide.



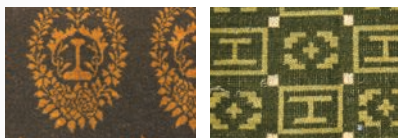
Osaka City tram running on the Naniwa-bashi Bridge (courtesy of the National Diet Library)



Kyoto City Trams

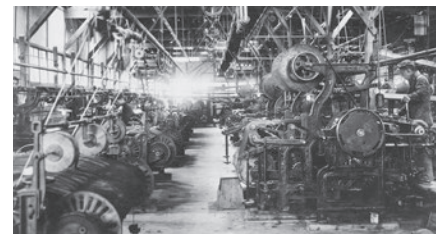
### Japan National Railways

In 1896, we succeeded in producing hand-woven moquette as a seat covering for the first time in Japan. This domestic moquette was adopted by Japan National Railways for its seat coverings in 1899.



Seat coverings adopted by Japan National Railways at that time

### Construction of Sumiyoshi Factory



In 1903, the Sumiyoshi Factory was built, which functioned as the main factory of Suminoe Textile for many years.

## Taisho Period 1912~

### Establishment of Suminoe Textile Joint-Stock Company

Suminoe Textile Joint-Stock Company was established in 1913, marking the first step in the 100-year history of Suminoe Textile as a corporate body.

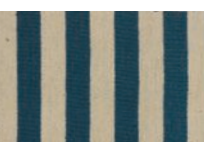


### Imperial Theatre

In 1915, the Company delivered seat coverings to the Imperial Theatre. Suminoe Textile's seat coverings were also adopted when the Imperial Theatre underwent extensive renovation in 1966.



The stage of the Imperial Theatre (courtesy of the National Diet Library)



Seat covering for the Imperial Theatre

### Vessels

In the Taisho Era (1912–1926), Suminoe Textile supplied carpets for the first class cabins of liners operated by Osaka Shosen Kaisha (now Mitsui O.S.K. Lines, Ltd.). In the Showa Era (1926–1989), our Company's products were adopted by many of Japan's renowned vessels.



Carpet in the first class cabin of an Osaka Shosen Kaisha ship



Carpet for the captain's cabin in the Battleship Yamato

## Showa Period 1926~ Contribution to the popularization of interior fabrics

During the periods of Japan's postwar recovery and rapid economic growth, Suminoe Textile pushed forward with the industrialization of the manufacture of carpets, an expensive product at that time, in order to promote their widespread use in ordinary households. In addition, our Company delivered automotive textiles to Japanese automobile manufacturers in response to the rapid rise of motorization, thereby contributing to the popularization of interior fabrics.

### Automotive industry

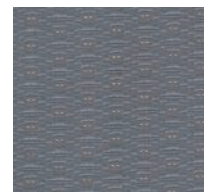
In 1931, Suminoe Textile supplied carpets and seat covering materials to automobiles assembled and manufactured in Japan for Ford Motor Company and General Motors. The Company delivered seat coverings to Toyota Motor Co., Ltd. (now Toyota Motor Corporation) in 1958. Since then, our products have been adopted by various Japanese automobile manufacturers one after another.



Seat covering for General Motors Japan



Floor carpet for a Ford



Seat covering for Toyopet Crown



Promotional photo used at that time

### Flying Feather

In 1955, a two-seater convertible, called the "Flying Feather," was manufactured by Suminoe Manufacturing Co., Ltd., a Suminoe Textile subsidiary, which was engaged in producing car bodies at that time.

### Imperial visit to the Sumiyoshi Factory



In 1956, Their Imperial Majesties the Emperor and Empress Showa visited our Sumiyoshi Factory.

### Tafton



Sample book

During the period of high economic growth, our Company released a new carpet called "Tafton." This product served as a catalyst that turned carpets, which had been high-end products until then, into life necessities.

### The Homeiden Imperial Palace building newly constructed in the Showa Era

The Homeiden Imperial Palace building is a banquet hall, the largest of all the Imperial Palace halls. In 1968, Suminoe Textile provided for this hall a hand-woven dantsu carpet of 836 m<sup>2</sup>, featuring a design based on a painting by Yasushi Sugiyama, a distinguished Japanese-style painter.



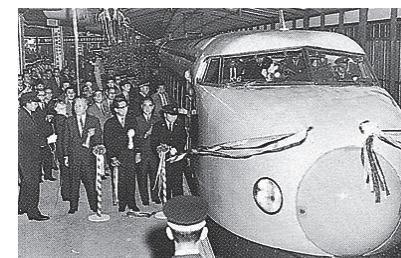
Hand-woven carpet

### Japan's first carpet tiles

In 1980, the Nara Factory (now Suminoe Techno Co., Ltd.), began the production of Japan's first carpet tiles.



### The Shinkansen bullet train



In 1964, when the Tokaido Shinkansen went into operation, our Company supplied seat coverings for the 0 series trains, which were then promoted as "the Dream Superspeed."



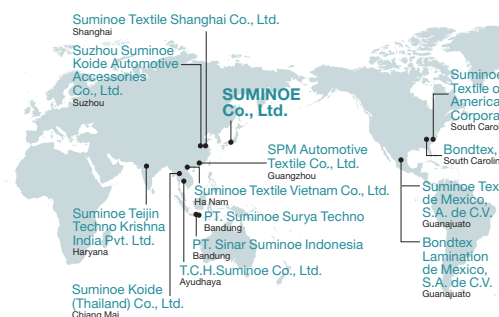
Seat covering for the first class (Green) cars

## Heisei Period 1989~ Initiative to realize a recycling-oriented society

Under our fundamental environmental philosophy, "KKR + A," or Kenko (Health), Kankyo (Environment), Recycle and Amenity, we are proactively developing environmentally friendly products, including ECOS® recycled carpet tiles produced under the "closed-loop recycling" system, in anticipation of a recycling-oriented society.

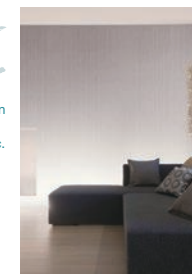
### Overseas expansion

We established a subsidiary that produces automotive textiles in Thailand in 1994. Since then, Suminoe Textile has expanded its global business operations by setting up manufacturing and sales sites in seven countries, including the United States and China.



### TRIPLE FRESH®

In 1998, Suminoe Textile developed TRIPLE FRESH® treatment technology, which can chemically and physically absorb and decompose formaldehyde, cigarette odor, garbage odors, the smell of sweat, and other malodorous substances that are generated daily in our environment, on a 24-hour basis.



Air-cleaning wall-coverings®



TRIPLE FRESH®



Tispa®

### ECOS® Recycled carpet tiles produced under the "closed-loop recycling" system

ECOS® was launched in 2011, is the industry's highest level eco-friendly carpet tiles. Collecting waste carpet tiles from the market and recycling them as resources.



### 130th anniversary of founding and 100th anniversary of incorporation

In 2013, Suminoe Textile celebrated the 130th anniversary of its founding and the 100th anniversary of its incorporation as a company.

