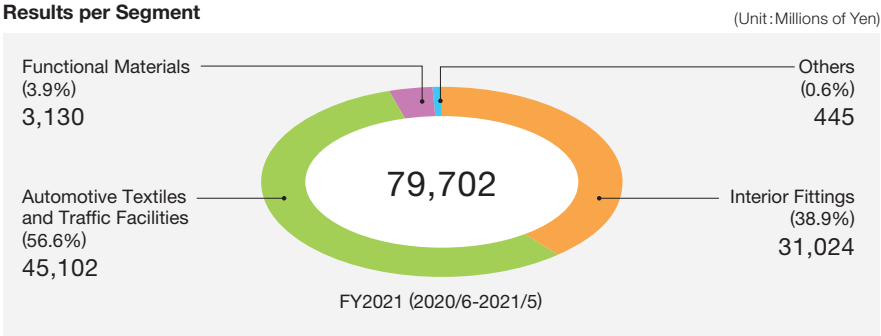
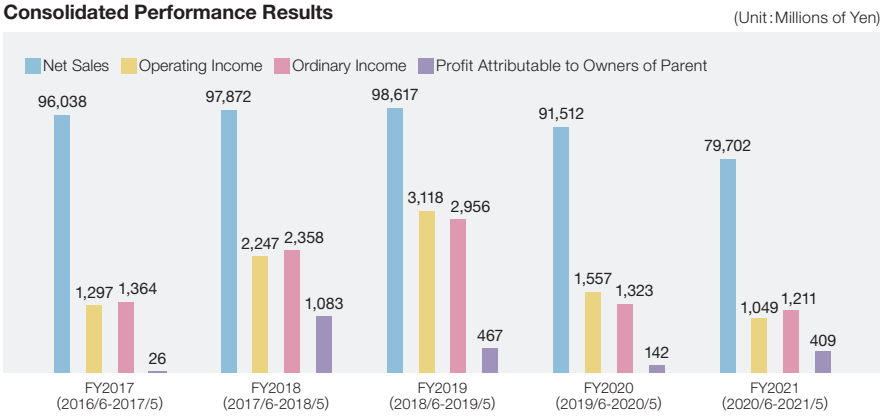


Corporate Summary

Name of Company	Suminoe Textile Co., Ltd.	
Head Office	11-20, Minami-Semba 3-Chome, Chuo-ku, Osaka 542-8504 Japan	
Founded	1883 (Founder Denshichi Murata began manufacturing carpets.)	
Incorporated	December 25, 1913 (Suminoe Textile Joint-Stock Company)	
Organizational Change	December 26, 1930 (Suminoe Textile Co., Ltd.)	
Capital	9,554,173,950 yen (As of May 31, 2021)	
Board of Directors and Corporate Auditors	Chairman	Ichizo Yoshikawa
	President	Teppei Nagata (Representative Director)
	Managing Director	Hiroaki Usugi (Representative Director)
	Director	Toshiro Maruyama
	Director	Eiichiro Kimura
	Outside Director	Haruo Shimizu
	Outside Director	Kohei Nomura
	Outside Director	Koichi Makino
	Outside Director	Yumiko Oida
	Corporate Auditor	Kiyokazu Ichikawa
	Outside Corporate Auditor	Atsuhiko Sonoda
	Outside Corporate Auditor	Takafumi Katayama
	(As of August 27, 2021)	
Number of Employees	253 employees (Consolidated group companies: 2,724 [1,555 in Japan; 1,169 overseas]) (As of May 31, 2021)	



Suminoe Textile Co., Ltd.

CORPORATE PROFILE 2021 – 2022

138 Years since Our Founding

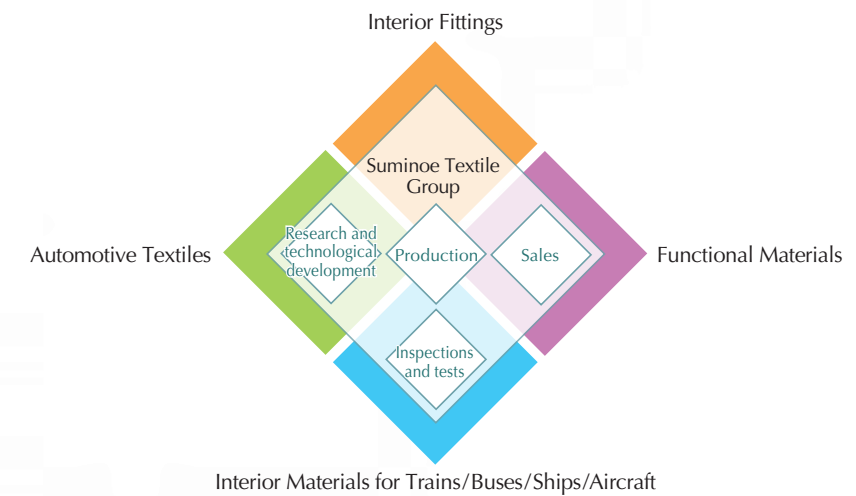
We will continue to create new value based on the trust earned throughout our history.



Teppei Nagata
President

Since its founding in 1883, Suminoe Textile has continued to offer enriched and comfortable lifestyles to customers through its excellent interior products. In recent years, the Company has vigorously engaged in developing environmentally friendly products, in line with its fundamental environmental philosophy, KKR + A, or Kenko (Health), Kankyo (Environment), Recycle and Amenity.

The Suminoe Textile Group also focuses on its overseas expansion. All our global sites strive to carefully meet customer demand in terms of quality, price and supply. By paying respect to each region's characteristics and cultures and promoting the diversification of human resources, Suminoe Textile will enhance its comprehensive strength as a global enterprise.



The greatest strength of the Suminoe Textile Group lies in maximizing the capabilities of all group companies, through close cooperation between experts in research and technological development, production and sales.

<p>Sales Expertise in proposing optimal solutions that precisely satisfy each customer's needs</p> <p>Production Production engineering capabilities that ensure the stable supply of high-quality products at low cost</p> <p>Research and technological development Expertise in developing functions and designs that cater to market trends</p>	<ul style="list-style-type: none"> SUMINOE Co., Ltd. Suminoe Textile Co., Ltd. (Industrial Material Business Headquarters) Suminoe Textile Co., Ltd. (Traffic Facilities Business Headquarters) Suminoe Textile Co., Ltd. (Functional Materials Business Headquarters) Suminoe Techno Co., Ltd. (Shiga Factory/ Nara Factory) Tango Textile Co., Ltd. Suminoe Textile Co., Ltd. (Kyoto Traditional Art and Craft Factory) Owari Seisen Co., Ltd. (Head Office Factory / Ishikawa Factory) Suminoe Textile Co., Ltd. (Technical Center) <ul style="list-style-type: none"> RUNON CO., LTD. Suminoe Works Co., Ltd. Suminoe Teijin Techno Co., Ltd. Marunaka Souei Co., Ltd. Suminoe Textile Co., Ltd. (Interior Business Headquarters) Teijin Tecloth Ltd. Suminoe Textile of America Corporation (United States) Bondtex, Inc. (United States) Suminoe Textile de Mexico, S.A. de C.V. (Mexico) T.C.H. Suminoe Co., Ltd. (Thailand) Suminoe Koide (Thailand) Co., Ltd. (Thailand) PT. Suminoe Surya Techno (Indonesia) Suminoe Teijin Techno Co., Ltd. (R&D Center) <ul style="list-style-type: none"> Sewing Hyogo Co., Ltd. Suminoe Textile Shanghai Co., Ltd. (China) PT. Sinar Suminoe Indonesia (Indonesia) CPO Co., Ltd. Suminoe Logistics Co., Ltd. Suminoe Teijin Techno Krishna India Pvt. Ltd. (India) SPM Automotive Textile Co., Ltd. (China) Suzhou Suminoe Koide Automotive Accessories Co., Ltd. (China) Suzhou Suminoe Textiles Co., Ltd. (China) Suminoe Textile Vietnam Co., Ltd. (Vietnam) Kansai Laboratory Co., Ltd.
--	--

● Interior Fittings ● Automotive Textiles ● Interior Materials for Trains/Buses/Ships/Aircraft ● Functional Materials ● All businesses

ECOS®

Recycled carpet tiles produced under the "closed-loop recycling" system

The ECOS® series of recycled carpet tiles has achieved the industry's highest levels of both the post-consumption recycled material usage rate and the CO2 emissions reduction rate.

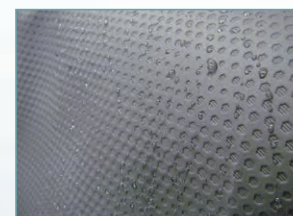


Air-cleaning wall-coverings®

With a superior level of safety, this wallpaper semipermanently deodorizes unpleasant smells by absorbing and decomposing substances causing offensive odors, on a 24-hour basis.

High-function seat surface material CELL-CLOTH®

CELL-CLOTH® is synthetic leather with a waterproof function and high moisture permeability, which is capable of preventing the seat from becoming sweaty.



Noise-absorbing carpet for automobiles

With noise absorption and insulation properties, this automotive floor carpet enhances the quietness inside a car.

Seat cushion material SUMICUBE®

Featuring light weight and safety in the event of a fire, SUMICUBE® is used for seats of various types of vehicles as a new cushion material. For this product, we have established techniques for after-use collection and recycling into fiber.

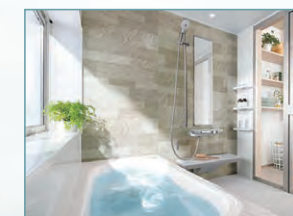


Flooring film for signs

This film serves as a non-slip mat that is easy to apply to the floor. With warnings or other signs printed on it, the film helps prevent accidents and attracts passengers' attention at the entrances/exits of trains and buses, as well as within these vehicles.

Floor materials for bathrooms

Manufactured by shaping eco-friendly olefin materials into a sheet form, this bathroom flooring is safe and care-free. It is soft and warm to the touch, and thus can effectively prevent cold shocks.



Deodorizing filters

We have developed deodorizing filters by applying our unique deodorizing technologies cultivated through the development of interior products. Our deodorizing filters find expanding applications in refrigerators, air cleaners, and stationary deodorizers for home use.



Our Originality

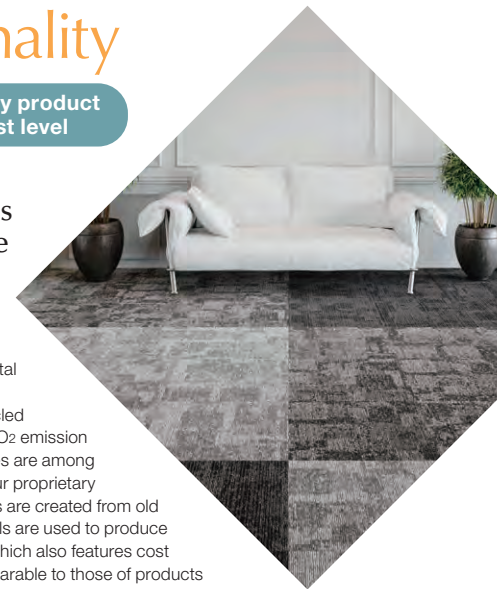
Environmentally friendly product
at the world's highest level

ECOS®
Recycled carpet tiles
produced under the
“closed-loop
recycling” system

ECOS® is a series of recycled carpet tiles produced using horizontal recycling technology. ECOS® has achieved a post-consumption recycled material usage rate of 77% and a CO₂ emission reduction rate of 42%.* These figures are among the highest in the world. Through our proprietary recycling system, recycled materials are created from old carpet tiles. These recycled materials are used to produce the backing materials for ECOS®, which also features cost effectiveness, realizing prices comparable to those of products produced from virgin materials.

* Figures for ECOS® SG-300, in comparison to our conventional products, according to LCA results.

Post-consumption recycled material usage rate **77%** CO₂ emission reduction rate **42%**



Interior Fittings

At the Vanguard of Lifestyle Creation

Ever since 1891, when its carpets were supplied to the Imperial Diet Building on the occasion of its opening, the Suminoe Textile Group has created comfortable and safe living spaces as a pioneer in the Japanese interiors industry. Currently, our curtains and carpets are primarily marketed by SUMINOE Co., Ltd. and our wallpaper and paper for sliding doors by RUNON CO., LTD. The Suminoe Textile Group is committed to providing environmentally friendly products that feature both excellent design and functionality, and serving diverse customers by offering a wide variety of interior products for public facilities, hotels, schools, hospitals, and office buildings, as well as for general households.

In recent years, we have worked on the production of eco-friendly products, under the theme of “KKR+A,” or Kenko (Health), Kankyo (Environment), Recycle and Amenity.

Introduction of products



Curtains: “U Life® vol.10”



Rugs and Mats:
“HOME® RUG MAT 2021-2022”



Hard floor materials with high functionality
and quality: “BERRY ALLOC® PURE LVT”



Wallpaper: “RUNON HOME 2020-2023”
CRAFT LINE®

What is doncho (plush hand-woven curtain)?

Doncho is a curtain that separates the stage from the auditorium. Our Company manufactures a wide variety of doncho, including: the prestigious Tsuzureori Doncho woven by hand by craftspeople; the Tango Doncho woven using the hooked rug method; the Suminoe Art Doncho woven with electronic Jacquard machines; the Yuzen Doncho, to which the Yuzen techniques are applied; and the Nassenger Print Doncho created with the Nassenger textile printing system, featuring high-resolution images reproduced by digital direct inkjet technology.



Doncho: [Tsuzureori Doncho]
Arcrea HIMEI
(Himeji City Cultural Convention Center)

What is dantsu (hand-woven carpet or hooked rug)?

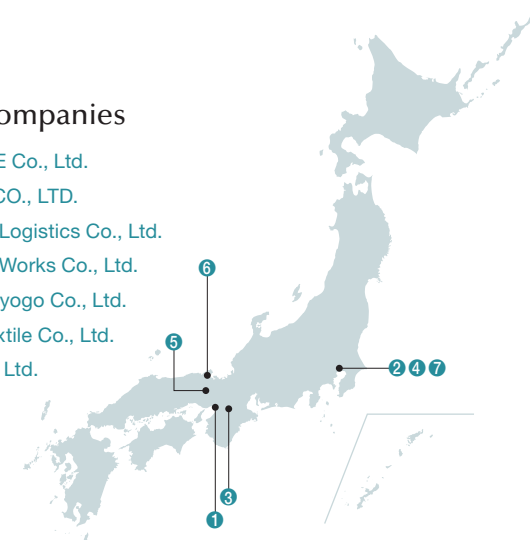
Dantsu is a generic name for high-class hand-woven floor carpets or rugs. The Suminoe Textile Group manufactures the hand-woven dantsu, derived from the Sakai-style Dantsu, which started to be woven in the Osaka Sakai area during the Tempō Period (1830–1844), and the Tango Dantsu, which is woven using the hooked rug method.

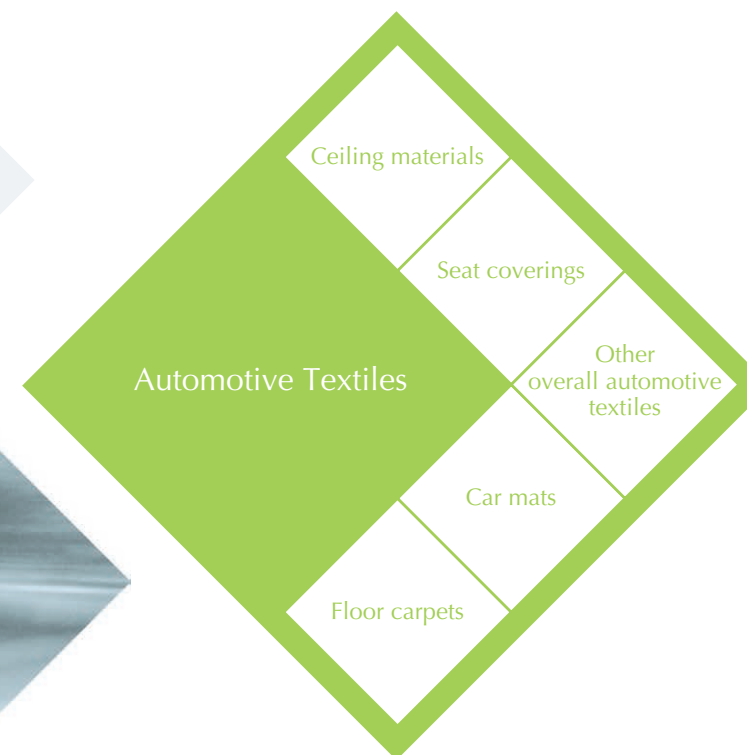


Custom carpet: [Wilton carpet]
The Tokyo Station Hotel
2F, Restaurant Blanc Rouge

Group companies

- ① SUMINOE Co., Ltd.
- ② RUNON CO., LTD.
- ③ Suminoe Logistics Co., Ltd.
- ④ Suminoe Works Co., Ltd.
- ⑤ Sewing Hyogo Co., Ltd.
- ⑥ Tango Textile Co., Ltd.
- ⑦ CPO Co., Ltd.



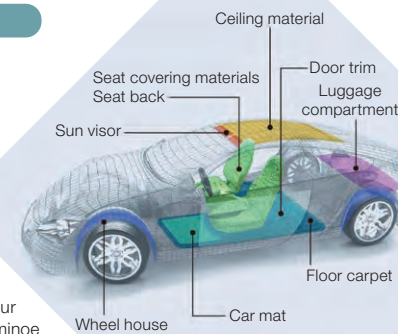


Our Originality

Global supplier

Automotive textiles for all car components from floors to ceilings

While strengthening our proposals for the use of seat coverings made of new materials, we also encourage the change of materials to textiles for car components in which the Company has not conventionally engaged, in order to expand the scope of our product delivery. Through these efforts, Suminoe Textile is promoting business diversification as a total supplier. Meanwhile, we strive to augment our overseas sites in conjunction with the global expansion of Japanese automobile manufacturers.



Supplying our products to

 all Japanese automobile manufacturers

Automotive Textiles

Our Expertise in Proposing Optimal Solutions as a Total Supplier

In 1931, Suminoe Textile supplied carpets and seat covering materials for automobiles assembled and manufactured in Japan for Ford Motor Company and General Motors. After World War II, the production of domestic automobiles increased, with our products adopted in these Japanese-made cars one after another. At present, Suminoe Textile supplies its products to all Japanese automobile manufacturers.

The greatest feature of our Company is that we can supply a total line of automotive textiles, from floors to ceilings, including headliners, seat covering materials, car mats, and floor carpets.

Outside Japan, the Suminoe Textile Group has now expanded its overseas presence by setting up 12 manufacturing and sales sites in six countries (the United States, Mexico, China, Thailand, Indonesia, and India), aiming at the creation of a globally optimized supply system.

Delivery track records



Harrier,
Toyota Motor Corporation



Leaf,
Nissan Motor Co., Ltd.



CX-8,
Mazda Motor Corporation

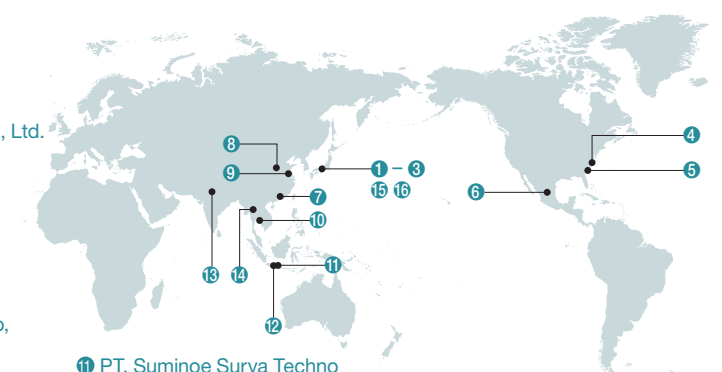


Fortuner,
Toyota Motor Corporation
(IMV series of vehicles for emerging markets)

What is the IMV series?
"IMV" stands for the "Innovative International Multi-purpose Vehicle." The IMV series of vehicles designed for emerging countries comprises the Hilux Revo (pickup truck), the Fortuner (sport utility vehicle) and the Innova (minivan). All the types of IMV series cars manufactured in Thailand, Indonesia, and India employ our products produced in overseas production facilities of the Suminoe Textile Group. We are striving to further expand the scope of our delivery, by reinforcing our global order intake and production system.

Group companies

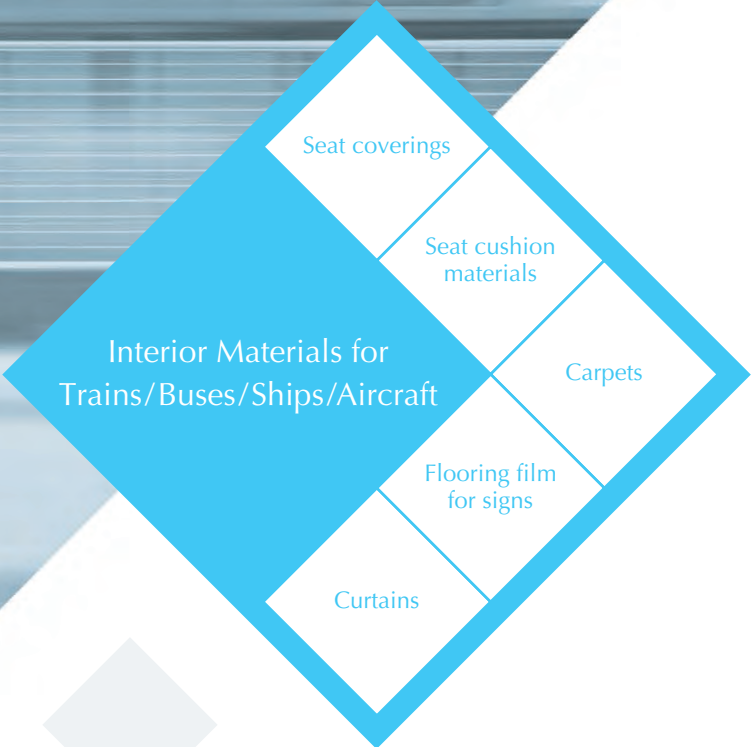
- ① Suminoe Teijin Techno Co., Ltd.
- ② Teijin Tecloth Ltd.
- ③ Owari Seisen Co., Ltd.
- ④ Suminoe Textile of America Corporation
- ⑤ Bondtex, Inc.
- ⑥ Suminoe Textile de Mexico, S.A. de C.V.
- ⑦ SPM Automotive Textile Co., Ltd.
- ⑧ Suzhou Suminoe Koide Automotive Accessories Co., Ltd.
- ⑨ Suminoe Textile Shanghai Co., Ltd.
- ⑩ T.C.H. Suminoe Co., Ltd.



- ⑪ PT. Suminoe Surya Techno
- ⑫ PT. Sinar Suminoe Indonesia
- ⑬ Suminoe Teijin Techno Krishna India Pvt. Ltd.
- ⑭ Suminoe Koide (Thailand) Co., Ltd.

(Associated company)

- ⑮ Sumisho Airbag Systems Co., Ltd.
- ⑯ KST Co., Ltd.



Our Originality

Creating a safe and comfortable space in a train

Seat cushion material "SUMICUBE®"

The SUMICUBE® polyester seat cushion material uses a safe raw material that does not emit poisonous gases, such as cyanide gas, in the event of a fire. For SUMICUBE®, we have established techniques for after-use collection and recycling into fiber, as part of our efforts to reduce industrial waste to zero. SUMICUBE® is adopted not only in commuter cars of JR and private railways and publicly operated transportation services, but is also widely used in express trains and Shinkansen bullet trains, whose seats are required to provide a higher degree of comfort.



East Japan Railway Company: E235 series



Seat cushion materials market share of **36%**

Interior Materials for Trains / Buses / Ships / Aircraft

Confidence Based on Our Experience as a Pioneer

In 1896, we succeeded in producing hand-woven moquette as a seat covering for the first time in Japan. This domestic moquette was adopted by Japan National Railways (now JR) for its seat coverings in 1899. Since then, we have supplied our products to JR, private railways and publicly operated transportation services, maintaining the top market share for more than a century. Currently, Suminoe Textile offers total proposals for seat coverings, curtains, wall materials, flooring materials and other interior materials for public transportation systems, such as Shinkansen bullet trains and other trains, buses, ships, and aircraft. We also deliver environmentally friendly products, including SUMICUBE® seat cushion material, which excels in terms of both safety and environmental performance.

Delivery track records



Hokuriku Shinkansen
Seat coverings and Roll screen



East Japan Railway Company
Saphir ODORIKO
Seat coverings, curtains, and carpets



ALL NIPPON AIRWAYS CO., LTD (ANA),
Boeing 777-300ER
Premium Economy Class
Seat coverings



SHINKI BUS CO., LTD.
Port Loop
Seat coverings



Keikyu Corporation
Series 1000
Seat coverings

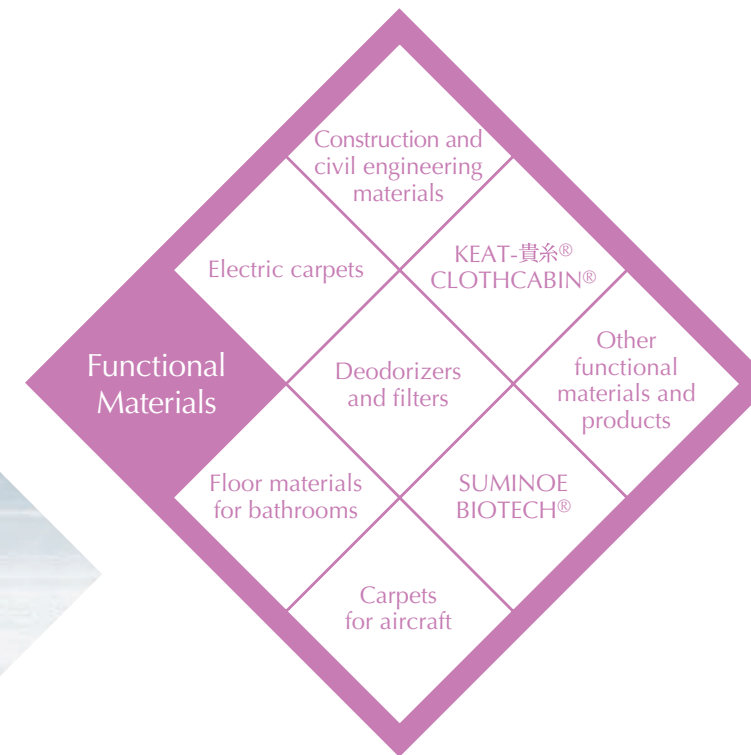


Tokyo Metro Co., Ltd.
Series 17000
(Yurakucho Line, Fukutoshin Line)
Seat coverings and SUMICUBE®

Group company

① Marunaka Souei Co., Ltd.





Our Originality

Our unique deodorizing technology TRIPLE FRESH®

Expanding technological applications into other fields in pursuit of further possibilities

Our unique deodorizing technology, originally developed for our interior products, is proactively applied to other fields. This technology is now incorporated not only into deodorizing filters used in air purifiers and other household appliances, but also in other different fields, such as clothing, shoes, medicine and nursing care. We are also exploring possibilities for our deodorizing technology, by encouraging its use in materials other than textiles, such as resin films.



Development of diverse applications



Functional Materials

In Pursuit of Endless Business Possibilities

Transcending the boundaries of our traditional business segments, such as interior fittings and automotive textiles and traffic facilities, we have embarked on business targeting other fields and industries. Suminoe Textile has offered products that incorporate the unique technologies we have accumulated, such as TRIPLE FRESH® deodorizing filters and olefin bathroom flooring. In addition, the Company offers new value in the field of functional materials (SUMINOE BIOTECH®) based on biotechnology, in keeping with the theme of KKR+A, or Kenko (Health), Kankyo (Environment), Recycle and Amenity.

Introduction of products



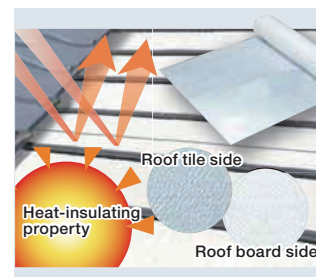
Electric carpet
The main unit is produced by Suzhou Suminoe Textiles Co., Ltd. and Suminoe Textile Vietnam Co., Ltd.



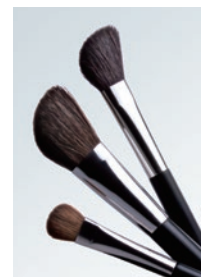
Floor material for bathrooms
We have developed bath flooring made of eco-friendly olefin materials



The Tispa® Series, "Real Odor Deodorization without Disguising with a Scent"
A series of stationary deodorizers for home use, making use of a deodorant filter.



Roofing materials
Our roofing sheets are breathable, heat-insulating, and highly energy-saving. These sheets are used as a waterproof material for the roofs of ordinary houses.



KEAT-貴糸®
Special polyester yarns for drawing and makeup brushes and fudepen (calligraphy pens).



Carpets for aircraft
Suminoe Textile has supplied carpets for aircraft to major Japanese airlines, and has maintained the top share of the domestic market.



CLOTHCABIN®
A high-function net for screen doors.
* CLOTHCABIN is a registered trademark of TEIJIN FRONTIER CO., LTD.



SUMINOE BIOTECH®
Functional materials based on biotechnology, and foods, processed foods, cosmetics, etc., making effective use of these materials.

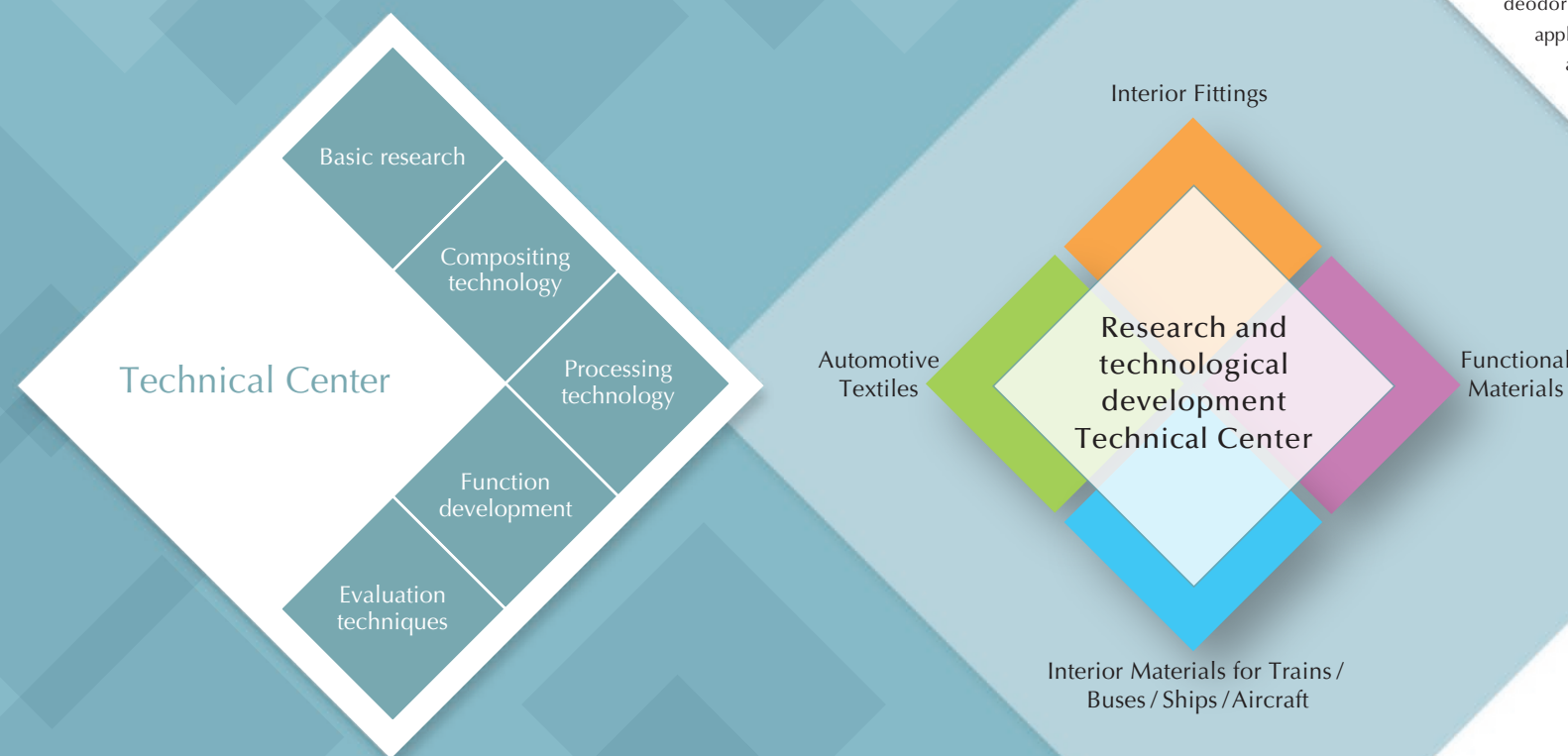
Group companies

- 1 Suzhou Suminoe Textiles Co., Ltd.
- 2 Suminoe Textile Vietnam Co., Ltd.



A Place where Innovations are Born

The Technical Center plays a pivotal role in the Suminoe Textile Group's research and technological development. The center is located in the Yamato Basin in Nara Prefecture in proximity to Horyuji Temple, which is listed as a World Cultural Heritage Site by UNESCO. In this quiet environment, our development activities are carried out mainly by young technological staff, in order to bring about technological innovations. The Technical Center conducts development activities under the theme of "KKR+A," or Kenko (Health), Kankyo (Environment), Recycle and Amenity. Aiming to embody this theme, the center works in collaboration with the relevant departments, focusing on the two mainstay technologies unique to us, i.e., textile-related functional processing and resin compounding/molding. The Technical Center will remain committed to sustaining strong customer trust in the Suminoe Textile Group, while venturing into new fields.



Topic

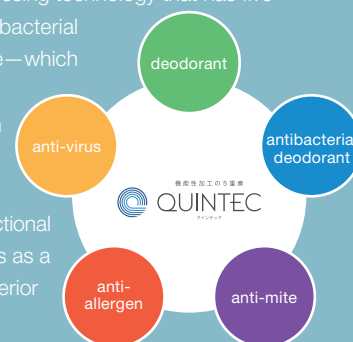
Participation in establishing international deodorization test standards

Suminoe Textile has participated in activities aimed at the international standardization of deodorization test methods for highly functional textile products. This resulted in the publication of ISO 17299-5 in April 2014. The quality of Suminoe Textile's products is enhanced by the high-level evaluation techniques we have developed over the last 20 years.



Multi-functional processing technology "Quintech®" developed as a new function

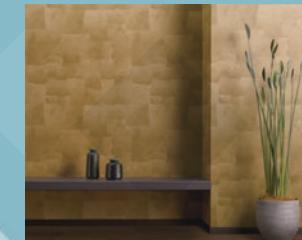
"Quintech®" is a multi-functional processing technology that has five functions—deodorant, anti-virus, antibacterial deodorant, anti-allergen, and anti-mite—which were developed using our original compounding technology and evaluation technology. We named it "Quintech®," meaning technology that features five functions. We will provide this new functional technology for various interior materials as a function to make the room and car interior cleaner and more comfortable.



Deodorizing technology

TRIPLE FRESH® playing an active role in various fields

In 1998, Suminoe Textile developed TRIPLE FRESH® deodorant treatment technology, which can absorb and decompose formaldehyde — one of the culprits behind sick house syndrome. Ahead of the times, TRIPLE FRESH® has been evolving into a deodorizing technology that meets the needs of various fields, finding wide applications not only in carpets, curtains and wallpaper, but also in automotive textiles, seat coverings for railway trains, and deodorizing filters. Currently, with enhanced effectiveness in deodorizing fecal and body odors, this technology is applied to medical and nursing-care products. We also own plenty of high-level analytical and evaluation equipment and facilities related to deodorization.



Deodorant wallpaper (Interior Fittings)

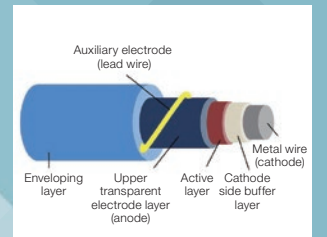


Deodorizer for home use (Functional Materials)

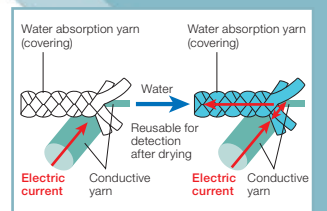
Smart textile

Entering the field of sensor fabrics using photovoltaic fibers and water wetting detection fabrics

As a project subsidized by NEDO, we developed fiber/textile-shaped photovoltaic cells through industry-academia collaboration. They are expected to be in high demand as autonomous power sources for wearable devices and indoor condition measurement sensors. In addition, we are aiming to commercialize them as sensor fabrics, together with water wetting detection fabrics and fabric electrodes, in the fields of nursing care and monitoring, and of health management during exercise.



Textile capable of photovoltaic power generation



Basic principles of water wetting detection fabrics

Olefin material compounding and molding technologies

Shaping high-function olefin materials into various forms

Olefin materials emit less smoke and toxic gases at the time of combustion, and are therefore friendly to both people and the environment. Capitalizing on its unique nanocomposite technology, the Company has developed highly functional products using olefin materials. Currently, our olefin materials are adopted in sign/warning films to be applied on the floors of buses and train cars, core materials for train doors, and Hokkarari Floor for TOTO's bathroom units.



Floor material for bathrooms (Functional Materials)



OH Film (Interior Materials for Trains/Buses/Ships/Aircraft)

Suminoe Textile has contributed to society as an interior manufacturer, in response to major trends of the times.

Suminoe Textile was founded in 1883, when our founder opened a factory in Sumiyoshi Village of Osaka Prefecture (now Sumiyoshi Ward of Osaka City). Our Company succeeded in manufacturing a carpet in 1890, and then hand-woven moquette as a seat covering for railway cars in 1896; both of these products were the first of their kind in Japan. As a pioneering manufacturer in the Japanese interiors industry, we have greatly contributed to the modernization of lifestyles as well as the development of interior furnishings for automobiles and railway trains. We hereby present a brief history of Suminoe Textile, which has courageously taken on various challenges as a trailblazer in the industry for more than 135 years since its founding, while overcoming many difficulties.



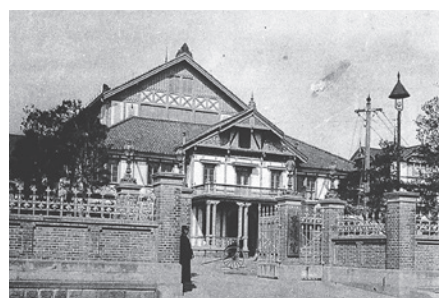
Founder
Denshichi Murata

Meiji Period 1868~ Contribution to Japan's modernization

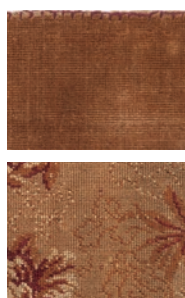
In the Meiji Era (1868–1912), Western culture was introduced to Japan in the context of civilization and enlightenment. The forerunner to our Company delivered its interior materials to the Imperial Diet Building (now the Diet Building) and other leading Western-style buildings in Japan, as well as to trains for railways, which were developed in line with the national policy. In so doing, we contributed to Japan's modernization.

Imperial Diet Building

In 1891, we supplied the carpets for the Imperial Diet Building on the occasion of its opening. For the present-day Diet Building, we continue to supply the "red carpet" and seat coverings used in the chambers of both the House of Councillors and the House of Representatives.



Imperial Diet Building (courtesy of the National Diet Library)



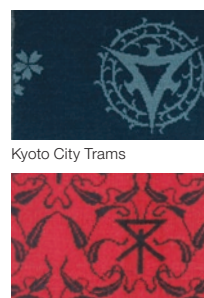
Carpets supplied to the Imperial Diet Building on the occasion of its opening

Trams

Trams, which began to run in Kyoto in 1895, became widely introduced in various parts of Japan as a means of transportation for the general public. Our Company designed seat coverings featuring city emblems for a number of these tram systems. Later it became a popular trend to incorporate city emblems in seat cover designs for city trams nationwide.



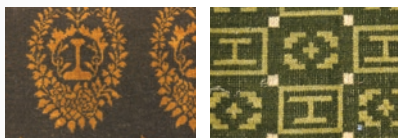
Osaka City tram running on the Naniwa-bashi Bridge (courtesy of the National Diet Library)



Osaka City Trams

Japan National Railways

In 1896, we succeeded in producing hand-woven moquette as a seat covering for the first time in Japan. This domestic moquette was adopted by Japan National Railways for its seat coverings in 1899.



Seat coverings adopted by Japan National Railways at that time

Construction of Sumiyoshi Factory



In 1903, the Sumiyoshi Factory was built, which functioned as the main factory of Suminoe Textile for many years.

Showa Period 1926~ Contribution to the popularization of interior fabrics

During the periods of Japan's postwar recovery and rapid economic growth, Suminoe Textile pushed forward with the industrialization of the manufacture of carpets, an expensive product at that time, in order to promote their widespread use in ordinary households. In addition, our Company delivered automotive textiles to Japanese automobile manufacturers in response to the rapid rise of motorization, thereby contributing to the popularization of interior fabrics.

Automotive industry

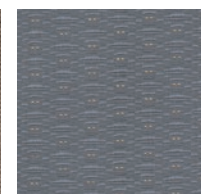
In 1931, Suminoe Textile supplied carpets and seat covering materials to automobiles assembled and manufactured in Japan for Ford Motor Company and General Motors. The Company delivered seat coverings to Toyota Motor Co., Ltd. (now Toyota Motor Corporation) in 1958. Since then, our products have been adopted by various Japanese automobile manufacturers one after another.



Seat covering for General Motors Japan



Floor carpet for a Ford



Seat covering for Toyopet Crown



Promotional photo used at that time

Flying Feather

In 1955, a two-seater convertible, called the "Flying Feather," was manufactured by Suminoe Manufacturing Co., Ltd., a Suminoe Textile subsidiary, which was engaged in producing car bodies at that time.

Ise Shrine Shikinen Sengu ceremony



Once every 20 years, the Ise Shrine Shikinen Sengu ceremony (transfer of the shrine's sacred object to a newly constructed main hall) is held. Ever since the 59th ceremony held in 1953, Suminoe Textile has supplied textiles to be used at this grand religious festival for sacred apparel and treasures (divine clothing, decoration of the main hall, etc.).

Tafton



Sample book

During the period of high economic growth, our Company released a new carpet called "Tafton." This product served as a catalyst that turned carpets, which had been high-end products until then, into life necessities.

The Homeiden Imperial Palace building newly constructed in the Showa Era

The Homeiden Imperial Palace building is a banquet hall, the largest of all the Imperial Palace halls. In 1968, Suminoe Textile provided for this hall a hand-woven dantsu carpet of 836 m², featuring a design based on a painting by Yasushi Sugiyama, a distinguished Japanese-style painter.



Hand-woven carpet

Japan's first carpet tiles

In 1980, the Nara Factory (now Suminoe Techno Co., Ltd.), began the production of Japan's first carpet tiles.



Imperial visit to the Sumiyoshi Factory



In 1956, Their Imperial Majesties the Emperor and Empress Showa visited our Sumiyoshi Factory.

The Shinkansen bullet train

In 1964, when the Tokaido Shinkansen went into operation, our Company supplied seat coverings for the 0 series trains, which were then promoted as "the Dream Superexpress."



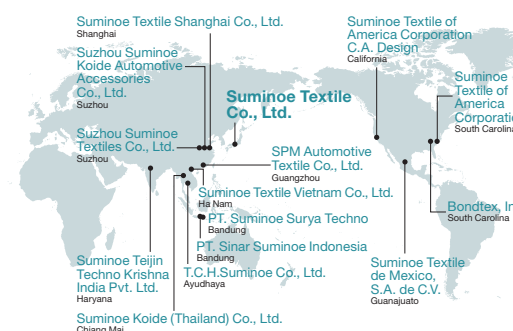
Seat covering for the first class (Green) cars

Heisei Period 1989~ Initiative to realize a recycling-oriented society

Under our fundamental environmental philosophy, "KKR + A," or Kenko (Health), Kankyo (Environment), Recycle and Amenity, we are proactively developing environmentally friendly products, including ECOS® recycled carpet tiles produced under the "closed-loop recycling" system, in anticipation of a recycling-oriented society.

Overseas expansion

We established a subsidiary that produces automotive textiles in Thailand in 1994. Since then, Suminoe Textile has expanded its global business operations by setting up manufacturing and sales sites in seven countries, including the United States and China.



TRIPLE FRESH®

In 1998, Suminoe Textile developed TRIPLE FRESH® treatment technology, which can chemically and physically absorb and decompose formaldehyde, cigarette odor, garbage odors, the smell of sweat, and other malodorous substances that are generated daily in our environment, on a 24-hour basis.



Air-cleaning wall-coverings®



TRIPLE FRESH®



Tispa®

ECOS® Recycled carpet tiles produced under the "closed-loop recycling" system

ECOS®, released in 2011, is one of the world's top-level environmental products. This product uses recycled materials made from used carpet tiles for its backing material, and recycled fiber for pile yarns.



130th anniversary of founding and 100th anniversary of incorporation

In 2013, Suminoe Textile celebrated the 130th anniversary of its founding and the 100th anniversary of its incorporation as a company.



Taisho Period 1912~

Establishment of Suminoe Textile Joint-Stock Company

Suminoe Textile Joint-Stock Company was established in 1913, marking the first step in the 100-year history of Suminoe Textile as a corporate body.



Imperial Theatre

In 1915, the Company delivered seat coverings to the Imperial Theatre. Suminoe Textile's seat coverings were also adopted when the Imperial Theatre underwent extensive renovation in 1966.



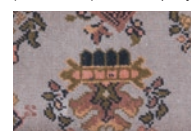
The stage of the Imperial Theatre (courtesy of the National Diet Library)



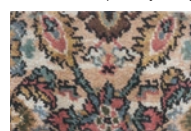
Seat covering for the Imperial Theatre

Vessels

In the Taisho Era (1912–1926), Suminoe Textile supplied carpets for the first class cabins of liners operated by Osaka Shosen Kaisha (now Mitsui O.S.K. Lines, Ltd.). In the Showa Era (1926–1989), our Company's products were adopted by many of Japan's renowned vessels.



Carpet in the first class cabin of an Osaka Shosen Kaisha ship



Carpet for the captain's cabin in the Battleship Yamato